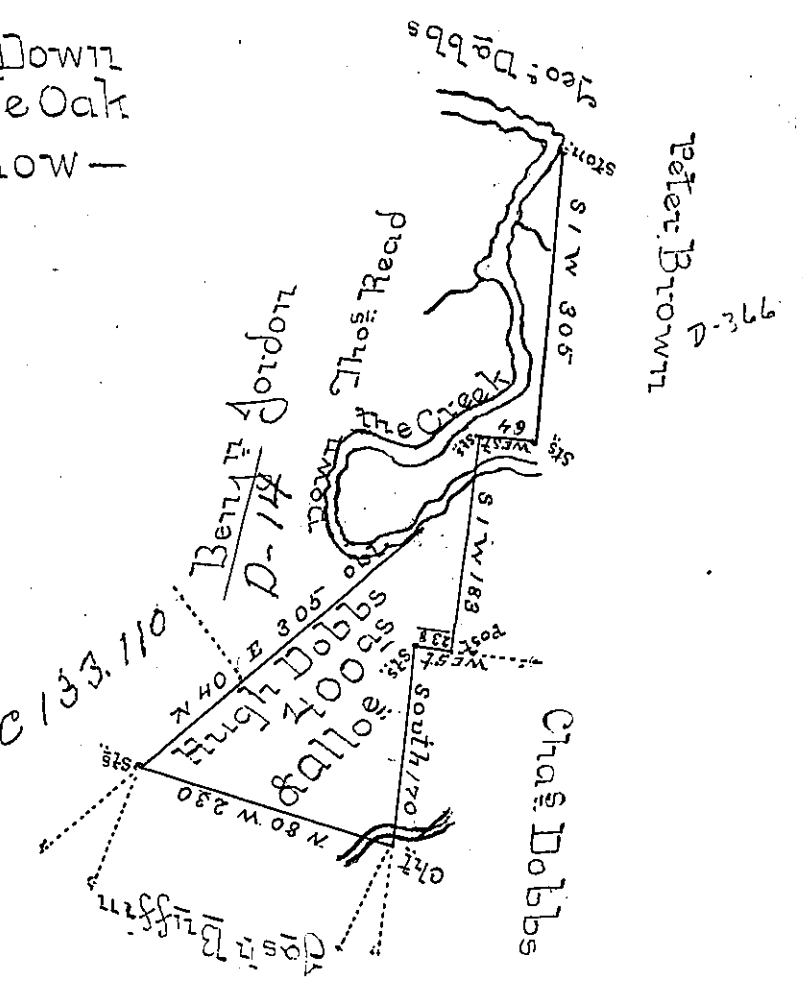


Course and Distance Down  
The Creek from White Oak  
above to the Stone below —

- S 70 W 61
- N 14 W 64
- N 31 E 50
- S 74 E 60
- N 55 E 100
- N 3 W 60
- N 28 W 28
- N 16 E 182



Draught of a Tract of Land Situate in Bradford Town-  
ship Clearfield County Containing Four Hundred Acres  
and the Usual Allowance of Six per Cent for Roads &c.  
Surveyed the 21<sup>st</sup> Day of May 1832 in pursuance of a  
Warrant Granted to Hugh Dobbs Dated the 18<sup>th</sup> Day of  
December 1793 for 400 Acres —

To Jacob Spangler Esqr }  
Surveyor General } David Ferguson D.S.

*IN TESTIMONY* that the above is a copy of the original remaining on file in the  
Department of Internal Affairs of Pennsylvania, made con-  
formably to an Act of Assembly approved the 16th day of  
February, 1833, I have hereunto set my Hand and caused  
the Seal of said Department to be affixed at Harrisburg, this

Twenty first day of January 1897  
*James W. [Signature]*  
Secretary of Internal Affairs.